



Editor's Comments

All Membership renewals are now to hand. Our database has been updated and corrected, and we are now able to complete the Members' Handbook for 2006. It should be available very soon.

The Seminar is almost upon us. We still have some tickets left; see the notice about them on a later page. Meanwhile the Chilterns Show in Great Missenden is fast approaching. (July 14th, 15th, & 16th) Last year we had a very successful marquee at the show, and we are intending to repeat that success in 2006. We will need a good display of work at all levels of ability, some for display only, and also plenty for sale. We will need demonstrators too. Please talk to Ralph Pooley, who is heading the team which will be mounting this show, about how you would like to be involved. *We really need you!*

May I also draw your attention to important changes to the Diary of events on a later page.

Finally, I would like tactfully to note that I and other members of the Committee were concerned that during a recent meeting, several private conversations were in progress in different parts of the room while the demonstrator was in action. We think that our demonstrators deserve the courtesy of a fair hearing, and that the rest of the members present deserve to be able to listen and watch without the distraction of unconnected conversations nearby. Comment on the demonstration by all means, but please do not indulge in long and unrelated conversations during a demonstration.

Alan

President

Stuart King

Chairman

Adrian Needham

'Brimbles' 114 Slough Road
Datchet. Berkshire SL3 9AF
Tel. 01753 593771

e-mail ajneedham@e-brimbles.com

Treasurer & Membership Sec.

Richard Bird

'Staffa' Back Lane
Chalfont St. Giles. Bucks. HP8 4PF
Tel. 01494 872503

e-mail richardwlbird@aol.com

Secretary

Mike Collas

8 Wiltshire Gardens Twickenham
Middlesex TW2 6ND
Tel. 0208 894 6759

e-mail mike.collas@btinternet.com

Committee members:

Ralph Pooley Ken Horn

Derek Pollecutt Geoff Norris

Will Mailes

Newsletter Editor (Co-opted)

Alan Spargo 73 Park Lane,
Harefield, Middlesex. UB9 6BL
Tel. 01895 823159

e-mail spargo73@waitrose.com

MWA web site latest.

Please note the revised web address at the top of this page. It is a shorter version of what we have used up to now, and it has proved to be very reliable.

Hot News! The Newsletter from No 71 April 2005 onwards are now all available on our web site in PDF format. *You will need Acrobat Reader to open these files.* If you do not already have it, it is a free download from <http://adobe.com/acrobat/readerstep2.html> Acrobat reader is a must have for every PC and Mac user, and it is often found on free DVDs issued with computer magazines.

An Important Message from Ray Key, President of the AWGB

AWGB - Mixed Messages

As your President I feel I should offer **you**, our members, some explanation of the changes that have happened, or are about to happen since your last issue of 'Revolutions' arrived.

On the face of it might look like we are sending out *mixed messages*, or are suffering from *the left hand not knowing what the right is doing* syndrome. Nothing is further from the truth.

Tony Witham told you he was not seeking re-election as your Chairman and Mike Dennis told you he was standing down as Editor of 'Revolutions' and appealed for a volunteer to take over. Well, Tony is now seeking re-election, but Mike, who has given selflessly of himself for more than a decade to the AWGB's cause in a variety of roles, is still standing down.

What we do have, is a new editor in place from within the committee. Five people who had contacted Mike were perhaps puzzled when he told them of Lionel's new tasks. Between copy going to the printer and 'Revolutions' dropping on your door step, things changed.

Tony had a series of health problems during 2005 and announced at the Seminar his decision not to stand for re-election as Chairman due to this. Since Tony wrote his Chairman's notes things have taken a turn for the better on his health front and he now feels ready and able to sit and again.

Lionel Pringle our Secretary and Vice- Chairman was going to offer himself to be your elected Chairman. Lionel had been warning the committee for some time he was not sure if they, or members, were ready for his, call a spade a spade, John Bull diplomacy. He also felt it was important

for the Chairman of the organisation to be a fully committed woodturner. So Lionel along with the rest of us is delighted Tony is standing again. With this change in place Lionel felt up to offering himself to take on the Editorship of 'Revolutions', this he feels, will offer him a fresh challenge within the AWGB. I think we can look forward to some interesting editorials Lionel will continue in the role of Vice-Chairman, but will stand down as Secretary at the AGM. Dave Buskell is standing for Secretary; he is already on board as Data Manager and will combine the two roles. Mike Morley our Treasurer let it be known long ago he will stand down at the AGM of 2007. This has the potential to cause problems, as bookings will start in December 2006 for the 2007 Seminar, but things are in place. Adrian Needham will handle all bookings and offer himself for election to the post of Treasure at the 2007 AGM.

The Seminar of 2007 will be my last hurrah after 20 years as the main co-ordinator and Mike Dennis' as the contract manager and liaison officer with the University Plans are being put in place to have Mike and myself shadowed so that there are people available to ensure that things run smoothly in 2009.

From what I have outlined I hope you now realise the seemingly *mixed messages*, *left hand not knowing what the right is doing*, is far from the case. Rather, there are plans in place to ensure smooth seamless transition. This does not mean that new blood is not required, we still have some committee members wearing too many hats, recent experience shows that it is detrimental to the organisation to overload any one person.

Ray Key (Hon AWGB President) March 2006

Seminar tickets

Tickets for the Seminar on Sunday 14th May 2006 from about 9.30 am to about 4.00 pm in the Village Halls, Great Kingshill. Bucks. may be obtained from Geoff Norris at Club Meetings, or by post from him at 17 Vivian Gardens, Oxhey, Watford, Herts. WD19 4PG Tel. 01923 445167. A local map of the venue accompanies the tickets.

55 tickets will be allocated on a "First Come First Served" basis. The cost is £12.50 per person all in. It represents super value for money, and remember, anyone can come. It is not necessary to be a member of MWA or even the AWGB, so you can invite your friends too. Please support the Instant Gallery by bringing one or more examples of your work for display. The Gallery is an essential part of the Seminar, and we hope to see examples of work from beginners through to experts. There is much inspiration to be found in the Instant Gallery

Little and Large

Alan Hazel, a former member of MWA paid us a visit in February. He is a busy professional turner



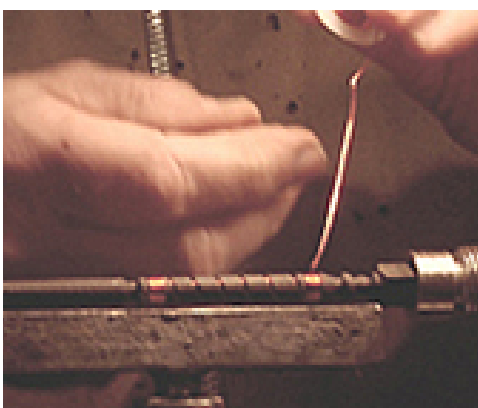
who tackles most types of turning. he brought along a miniature lathe which he mounted on the bed of the Poolwood lathe. He began with the making of lace bobbins. First he passed around a stand

festooned with beautifully made bobbins, crafted from exotic woods and other materials. He intended to demonstrate only the main processes of bobbin making, including those with spiral decoration, but would not fully finish them as time was limited. Choice of materials was dealt with, together with specialised drive centres and miniature tools. Lathe speeds, he said, were usually high. 5000 RPM allows fast work and good finishes, though lower speed can be used with success on larger lathes.

Alan demonstrated making the basic



Midlands style bobbin from a suitable hardwood, followed by spirally decorated bobbins. These are much more simple to make than might be imagined, and their decoration may include wire winding as well as other means. Alan spoke about using various

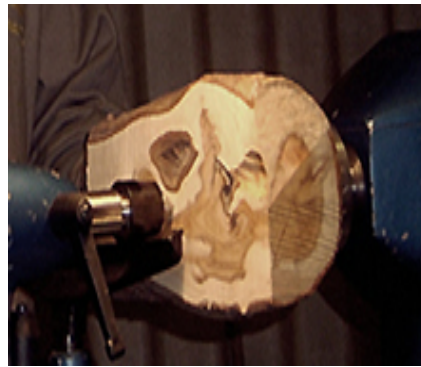


materials he uses, ranging from exotic woods through bone and modern plastics materials. He showed finished examples of elaborate bobbins

which were once made to show off the skill of the maker, but which have now become collectors'

pieces. almost anything is possible given imagination and time.

After the tea break, Alan turned to the basic steps in making a rectangular bowl. A part seasoned log was mounted propellor style on a screw chuck, and the outside of the bowl was turned, leaving a dovetail spigot for future remounting. Most of the work was done with a small sharp bowl gouge. Even so, the screw chuck showed signs of losing its grip as he worked. In retrospect it might have been better to have made a chucking spigot to replace the screw chuck as soon as possible during the work. It was possible to use power sanding on this piece, albeit with great care towards its outer edges.



Once rechunked on the spigot made earlier, the inside of the bowl was taken out, again with a relatively small bowl gouge. Light cuts were taken, bearing in mind that thin wood flexes under the pressure of the cut, leaving ripples which are very difficult to remove. It is also desirable for the bark edging to remain on the piece, which requires skill and care if it is to be achieved.

Alan was not able to finish this bowl, as the evening had come to its close, but he did succeed in achieving his aim, which was to demonstrate the basic processes for making very small items and also very much larger



items. he gave much good advice, and many hints and tips during his presentation.

Library Update

New Books

B30	Making Toys in Wood	Charles Hayward
B32	Woodturning	Klaus Pracht
B33	The Complete guide to Wood finishes	Derrick Crump
B34	Pyrography. the Art of Woodburning	Bernard Havez & Jean-Claude Varlet
B36	Make Money from Woodturning	Ann & Bob Phillips
B38	Good Wood finishes	Albert Jackson & David Day
B40	Turning Wood	Richard Raffan
B42	Turning Bowls	Richard Raffan
B44	Basics of Craftsmanship	Fine Woodworking
B46	Ingenious Jigs & Shop Accessories	Fine Woodworking
B47	Woodturning Projects. A Workshop Guide to Shapes	Mark Baker
B48	Woodworking Techniques - Furniture Building	Fine Woodworking
B50	Joinery. Shaping & Milling Furniture Parts	Fine Woodworking
B52	Practical Designs. Solutions & Strategies	Fine Woodworking
B54	Finishes & Techniques	Fine Woodworking
B56	A Guide to Toy Safety & List of Members	British Toymakers Guild
B58	Beyond basic Turnery	Jack Cox
B60	Trees in Britain Europe & North America	Roger Phillips
B64	Tools & Equipment. Test Reports Book 1	Woodturning
B66	Making Gifts with Woodworker	
B68	Trees of Britain & Europe	G. Aas & A. Riedmiller

New Video Tapes & DVDs

T106	Hand Thread Chasing DVD	Allan Batty
T108	Chosen 50 pieces at AWGB Seminar 2006	AWGB
T110	Turn It On No 1 DVD Footless Bowl. Box with Gold Leaf Inlay. and Sharpening	Jimmy Clewes
T112	Turn It On No 2 DVD Bowl with Brass Inlay. Long Stem Goblet	Jimmy Clewes
T114	Turn It On No 3 DVD Arabic Box. Bowl with Silver Inlay	Jimmy Clewes.
T116	Classic Profiles Between Centres	Dennis White
T118	Turning Between Centres	Dennis White
T162	Eccentric Chuck Projects DVD	Sorby
T164	Eccentric Chuck Projects Video	Sorby

Gordon wishes to thank Ian McLachlan, Tony Brown, Brian Wooldridge, Sean Stewart, & Pete Morley for their donations of books and Videos for the Library, and for magazines for sale for Library funds. Finally, if by chance anyone has a copy of Woodturning Techniques by Mike Darlow which should have been returned to the Library, Gordon would be very glad to have it back.

Little people!



Brian Partridge was a most welcome visitor on 9th March. He was to present unusual off centre turning by making a most attractive figurine. A collection of these is shown in one of the pictures.

Off centre turning is often the subject of various complicated and expensive chucks and jigs,

but for this exercise a chuck with “gripper jaws” is ideal. Dovetail or “C” jaws can also be used.

Brian had produced a detailed instruction sheet which would help us to follow and then remember what he showed us. His wood was already prepared to a cylinder of about 1.75” diameter with a knob turned on one end and centred on the other end. The knob would be held in the chuck, while the other end would be given offset centres as the work progressed.

First the foot and legs of the figurine were turned with a spindle gouge, on the true centre.



This was straightforward turning. Sanding and finishing were carried out at this stage. Next the wood was removed from the lathe, and examined to see how the figure of the grain should show on the finished figurine. Once this was decided upon, a line should be drawn through the centre at the outer end of the piece. All future offset centres should be placed along this line, so ensuring that the features of the figurine would also be in line, and the grain figure where it is intended to be. *Note.* The remaining supporting piece of wood at the centred end must be left thin so as not to leave excessive weight when offset turning

Now came the first offset, which enabled the hips and waist of the figurine to be produced. Lathe speed was important. Variable speed is ideal but however it is done, starting at a low speed, and increasing carefully to what seems to be the fastest safe speed is the rule. A small sharp spindle gouge is the tool for turning the hips and waist, which

were sanded and fully finished.

The second offset was stepped off with dividers from the original centre, and the neck and



shoulders of the figurine turned and finished as before. It only remained to make the last offset, and the head was turned and mostly finished. Although this is not on the crib sheet, it might be



a good idea to return to the true centre and very carefully remove the supporting

disc at the end before equally carefully parting off at the head end with a skew chisel. The top of the head was hand sanded and finished.

A suitable base was already to hand, and the figurine could have been left at the point, but Brian proceeded to make a hat for it from unseasoned branch wood. This was classic thin walled turning but on a miniature scale. It was expected that as the wood dried, the brim of the hat would assume a curly shape. It was attached to the figurine by a blob of Blu-Tac!

This was an interesting and informative demonstration, enlivened by Brian’s amusing and informative patter throughout, and made clear by close up video presentation.



Some appropriate advice!

“If you don’t lose a few, then you are not trying!” John Jordan on extending the limits of your turning

Diary changes.

1) The Exhibition at Chiltern Open Air Museum from 17th to 18th June will now not take place, but we have been offered another stand at the Live Craft show from September 1st to 3rd at Gt. Missenden. Watch this space for more details.

2) Because a vital letter to us and a booking form were lost in the post, we have been unable to book the annual show in the Cow Byre. We have asked for first refusal in the event of a cancellation, so stand by for a very short notice mobilisation if a slot becomes available.

Wood and Food

An article you perhaps ought to read.

In the March 2006 edition of Traditional Woodworking there is an interesting article concerning the safety of woods in contact with foods. In general, the writer concludes that commonly used seasoned woods are not likely to be intrinsically poisonous when in contact with food. He said that close grained and least colourful woods, which have no taste or smell are the most safe. He lists as safe: Beech and Sycamore (softwoods), and Ash, the Fruit woods, Maple, Olive, and Holly (hardwoods). Also these woods are not likely to splinter, which is another important property.

There is much more in the article, which touches on wood safety with young children, safe finishes. (we are unhappy about the suggestion that Walnut Oil is suitable - what about Nut Allergy?) - and allergic reactions to dust and so on. The article concludes with information on the Health & Safety Executive's publication 'Toxic Wood -Woodworking Information Sheet No 30'. This can be ordered free of charge on 078 788 1165. More information on 0845 345 0055, or visit:-

www.hse.gov.uk/pubns/woodindex/toxicwoods

Footnote. I am indebted to Gordon Cookson for the following update on Walnut Allergy: It seems that if Walnut Oil is boiled and allowed to cool before using it as a finish, allergic reactions can be avoided. This has been confirmed by Allergy U.K. which is the leading authority on the subject.

Diary Dates

11th May Nick Arnull. Nick Arnull is renowned for his beautifully decorated hollow forms.

14th May MWA Annual Seminar at Great Kingshill. See details on page 2

8th June Tom Pockley. Subject of his demonstration to be announced.

13th July Rodger Foden. Rodger is a former member of MWA. Despite being a handicapped person, he has become a very skilful professional turner

14th - 15th - 16th . The Chilterns show at Great Missenden

10th August Club Night. Activities to be notified. If you would like any particular woodturning matter dealt with at this meeting please talk to Adrian Needham, or any committee member.